

Contact Us

If you have any questions please don't hesitate to get in touch and we will be more than happy to help in any way we can. Each Family link worker can be contacted on their own personal mobile number:

Emma Morris

emma.morris@denbighshire.gov.uk

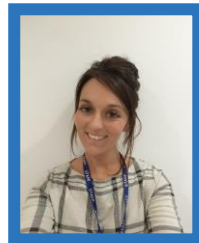
07825 523340



Stephanie Mather

stephanie.mather@denbighshire.gov.uk

07917 814835



Family Link Workers – a friendly face and a listening ear.



*Family Link
Workers*

Support for Children



Family link workers work with children from birth throughout the Foundation Phase. We run Language and Play groups throughout the County and work alongside local health visitors and school nurses. Our role also involves working within preschool and primary school settings delivering fun activities to promote learning and development for individuals and small groups. We are happy to provide advice and guidance for any areas of concern you may have including the subjects displayed above.

Family Support



Family Link workers also offer support, advice and guidance for families who are experiencing difficulties. Life is full of challenges that sometimes catch us by surprise and we are more than happy to support parents and the family during these times. We liaise with many other professionals and can refer for support to help the family through any difficult situations including those above. Sometimes just having a familiar friendly face and a listening ear to confide in is all it takes, which we are happy to provide.