

## Family Link Workers

**'A friendly face and a listening ear'**

I would like to introduce our **Family Link Workers** Emma Morris and Lucy Evans. The **Family link team** work across the Foundation Phase supporting families and running small group / one to one interventions & nurture sessions with the children, to support their learning and development, attention and listening skills, behaviour and confidence. Below is some information about Emma and Lucy which explains a little about who they are, what their role is and how they can help.

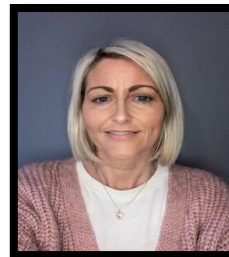
I hope that the information provided is useful and if you feel that Emma or Lucy could help in any way, then please contact them on the email or numbers provided.

*Hi, we are the Family Link Workers based in Ysgol Penmorfa. We are both mothers to 3 children so understand how challenging and busy life can be and what difficulties you may face being a parent. We have over 18 years' experience of working within a range of pre-school and school settings and have gained lots of knowledge along the way to help with a variety of problems. Please don't hesitate to ask us anything! If you would like to talk about any concerns you have please give us a ring or email anytime. We are happy to help in any way we can, even if you just need a cuppa and a friendly chat.*



[emma.morris@denbighshire.gov.uk](mailto:emma.morris@denbighshire.gov.uk)

07825 523340



[lucy.evans@denbighshire.gov.uk](mailto:lucy.evans@denbighshire.gov.uk)

07825 531371

### We can help with:

- |                             |                              |                            |                       |                         |
|-----------------------------|------------------------------|----------------------------|-----------------------|-------------------------|
| <b>Behaviour</b>            | <b>Anxiety / Stress</b>      | <b>Housing</b>             | <b>Finances</b>       | <b>Bereavement</b>      |
| <b>Divorce / Separation</b> | <b>Employment / Training</b> | <b>Domestic Violence</b>   |                       |                         |
| <b>Form filling</b>         | <b>Toileting</b>             | <b>Speech and language</b> | <b>Sleep Routines</b> | <b>Health / Illness</b> |